

8

7

6

5

4

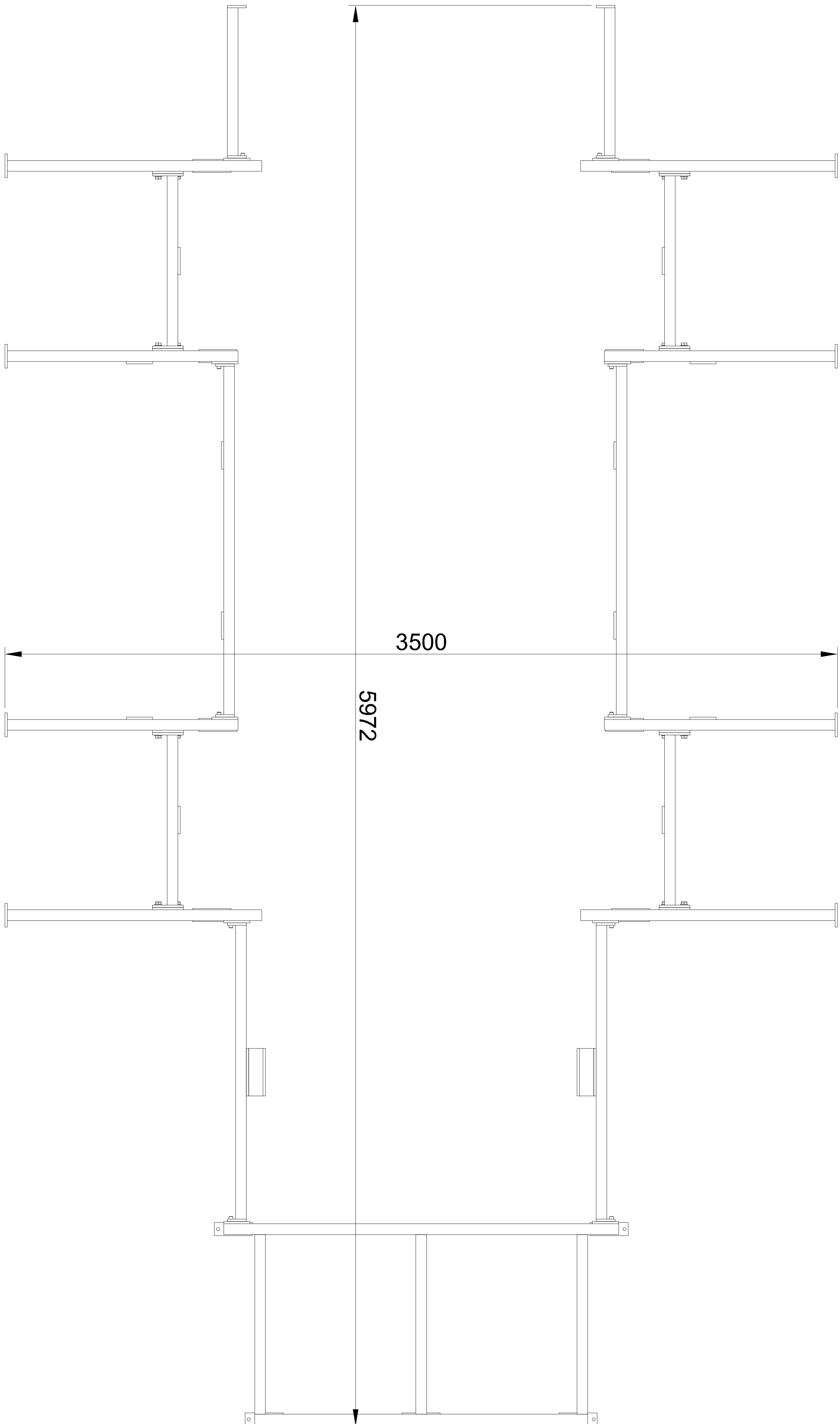
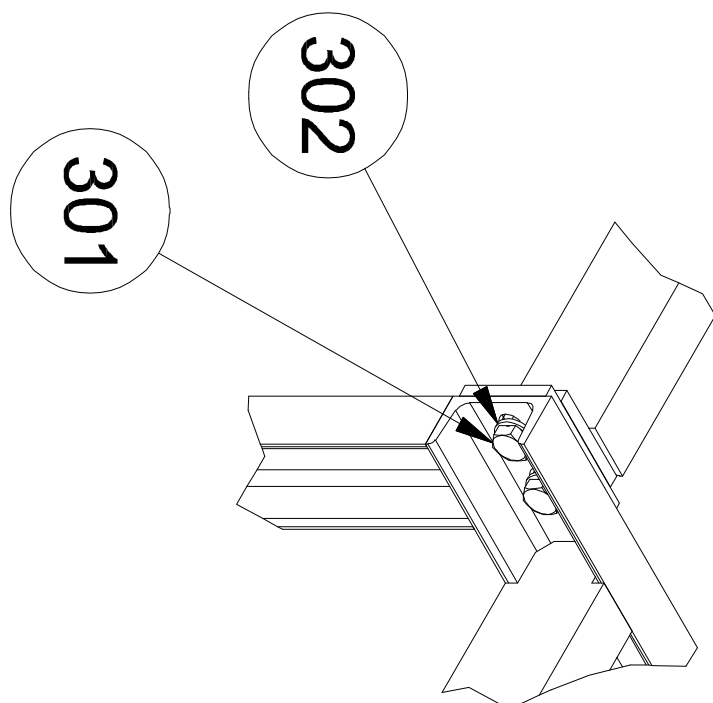
3

2

1

F

A ( 1 : 10 )



D

E

D

C

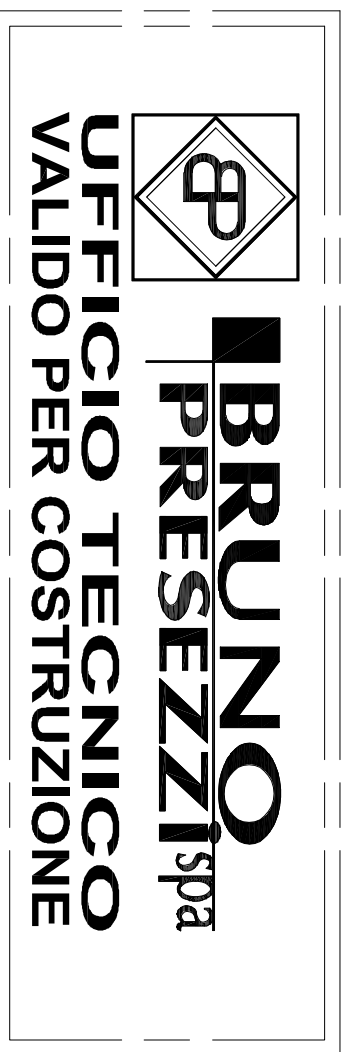
C

B

B

A

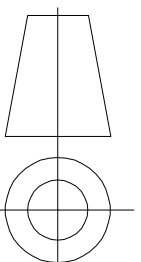
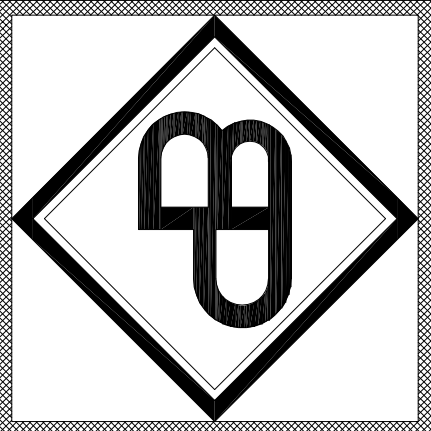
A



46	Barra filettata M12 + cartuccia materiale ancoraggio	M12 threaded rod + anchoring material cartridge	303	0 MASSA	Tassello chimico	0	
36	Rondella piana 17x30 UNI 6592	Flat washer 17x30	302	R40	C101001870	0	
36	V.T.E. M16x40 - UNI EN 24017	HEX. HEAD SCREW	301	Acc. CL. 8.8		0,1	
		M16x40-UNI EN 24017					
1	Telaio sostegno lamiera	Sheet metal support beam	109	S275JR EN 10025	60-26-008-109	60,2	
2	Trave sostegno lamiera	Sheet metal support beam	108	S275JR EN 10025	60-26-008-108	14,4	
2	Trave sostegno lamiera	Sheet metal support beam	107	S275JR EN 10025	60-26-008-107	6,2	
2	Trave sostegno lamiera	Sheet metal support beam	106	S275JR EN 10025	60-26-008-106	6,1	
2	Trave sostegno lamiera	Sheet metal support beam	105	S275JR EN 10025	60-26-008-105	27,6	
4	Trave sostegno lamiera	Sheet metal support beam	104	S275JR EN 10025	60-26-008-104	8,5	
2	Trave sostegno lamiera	sheet metal support beam	103	S275JR EN 10025	60-26-008-103	15,6	
2	Trave sostegno lamiera	Sheet metal support beam	102	S275JR EN 10025	60-26-008-102	5,8	
2	Trave sostegno lamiera	Sheet metal support beam	101	S275JR EN 10025	60-26-008-101	22,3	
Q.tà	Descrizione	Description	Pos.	Materiale	Numero Parte	Massa	R.C.
	S.P.	R.V.	R.V.			294,1 kg	
	Disegnato	Verificato	Autorizzato	Materiale	Massa		

Descrizione:  
**Telaio per lamiera Caster Linea 2 - TT1000/1450**  
(Sheet metal frame for Caster Line 2 - TT1000/1450)

07/10/2025	DATA	Disegno N.	Scala: 1 : 20
COMMESSA N.		61-26-00C-001	Revisione: 0
DIS. ASSIEME			Foglio: 1 di 1
A terminare di legge e' rigorosamente vietato riprodurre o comunicare a terzi il contenuto del presente disegno			A2



Via per Omega 8 - BURAGO DI MOLICO (VA) - ITALY  
Tel. 038635021 FAX 038681973 - e-mail: bruno.prezzi@brunoprezzi.com

F

F

E

D

C

B

A